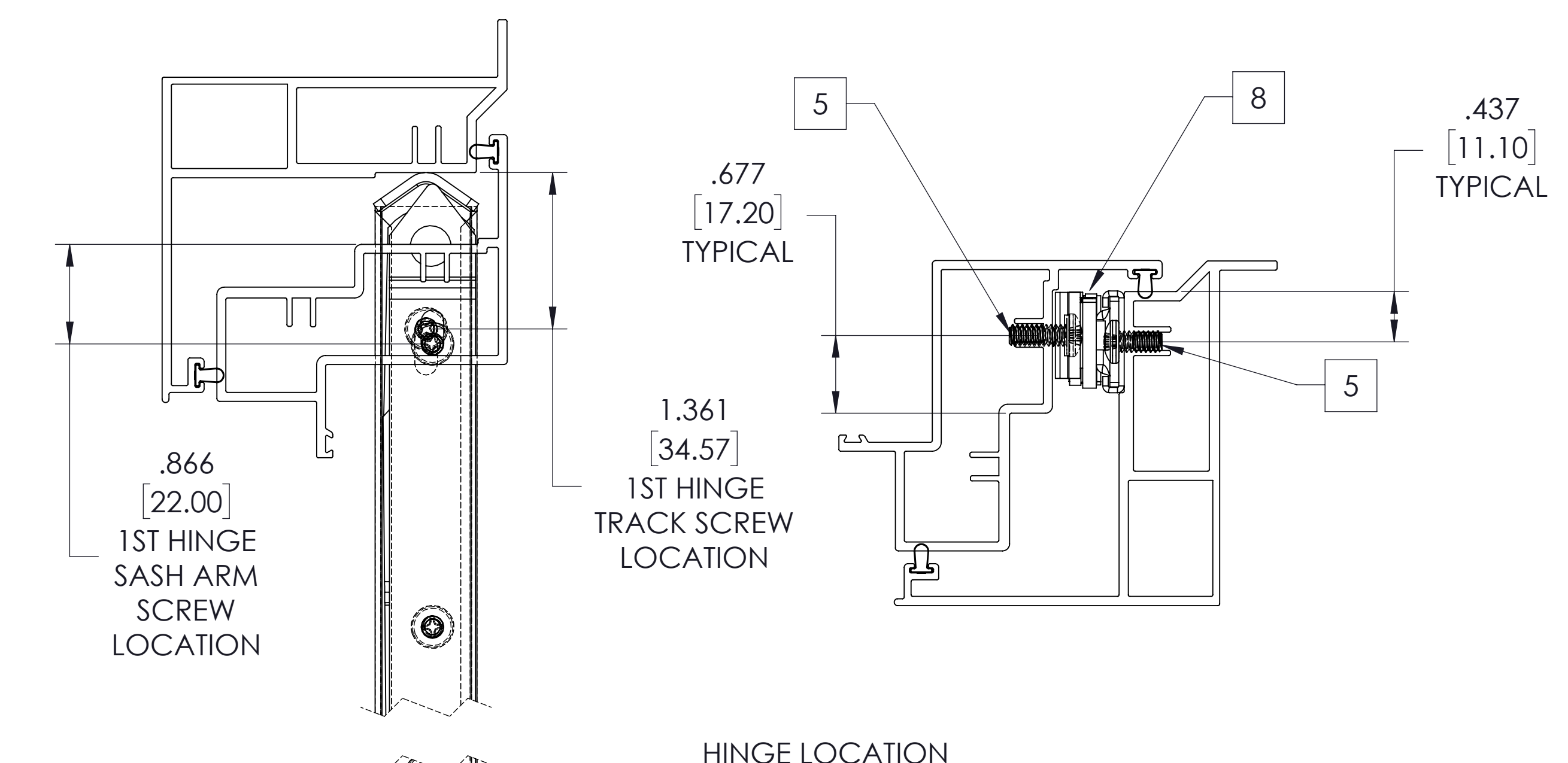
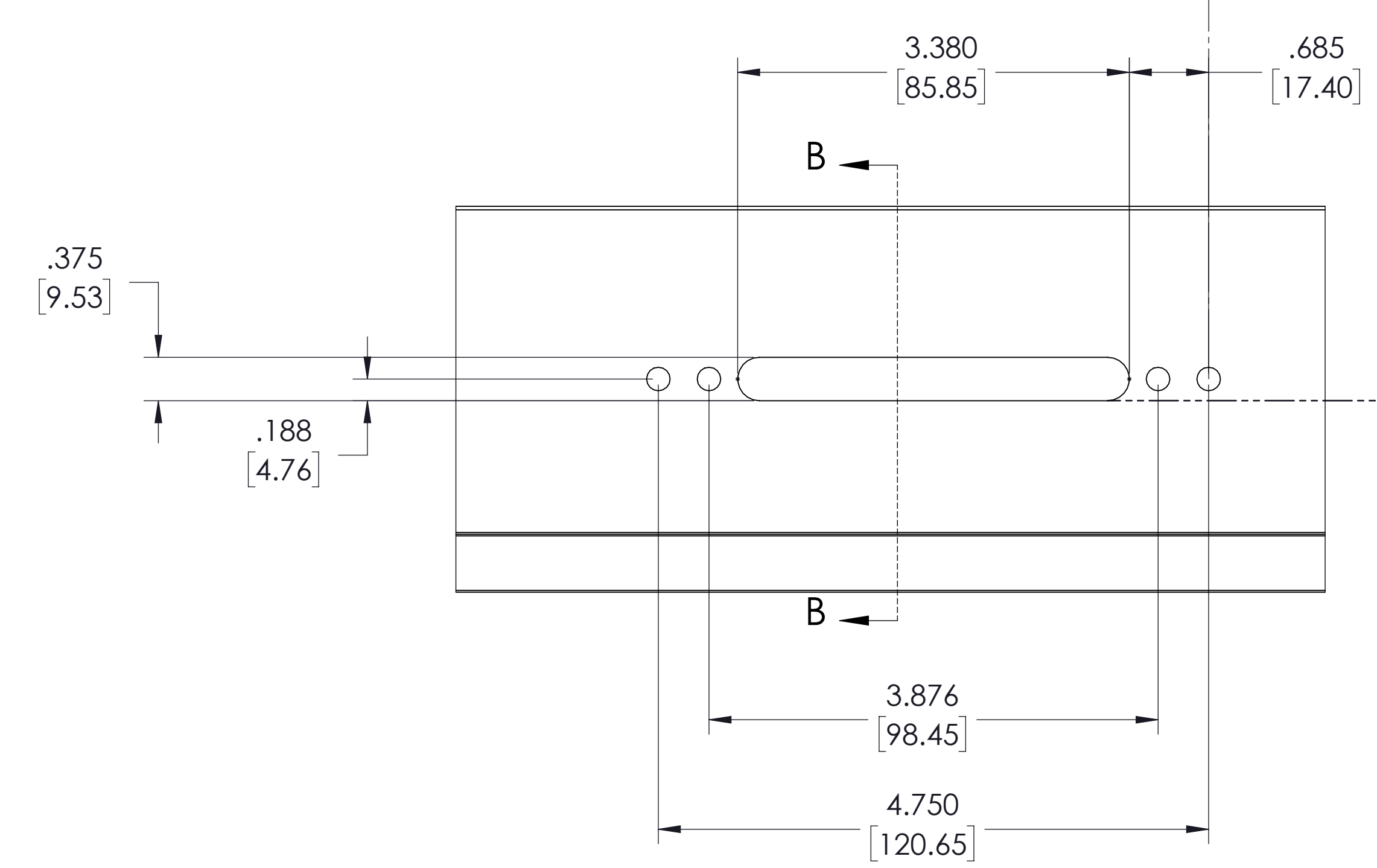
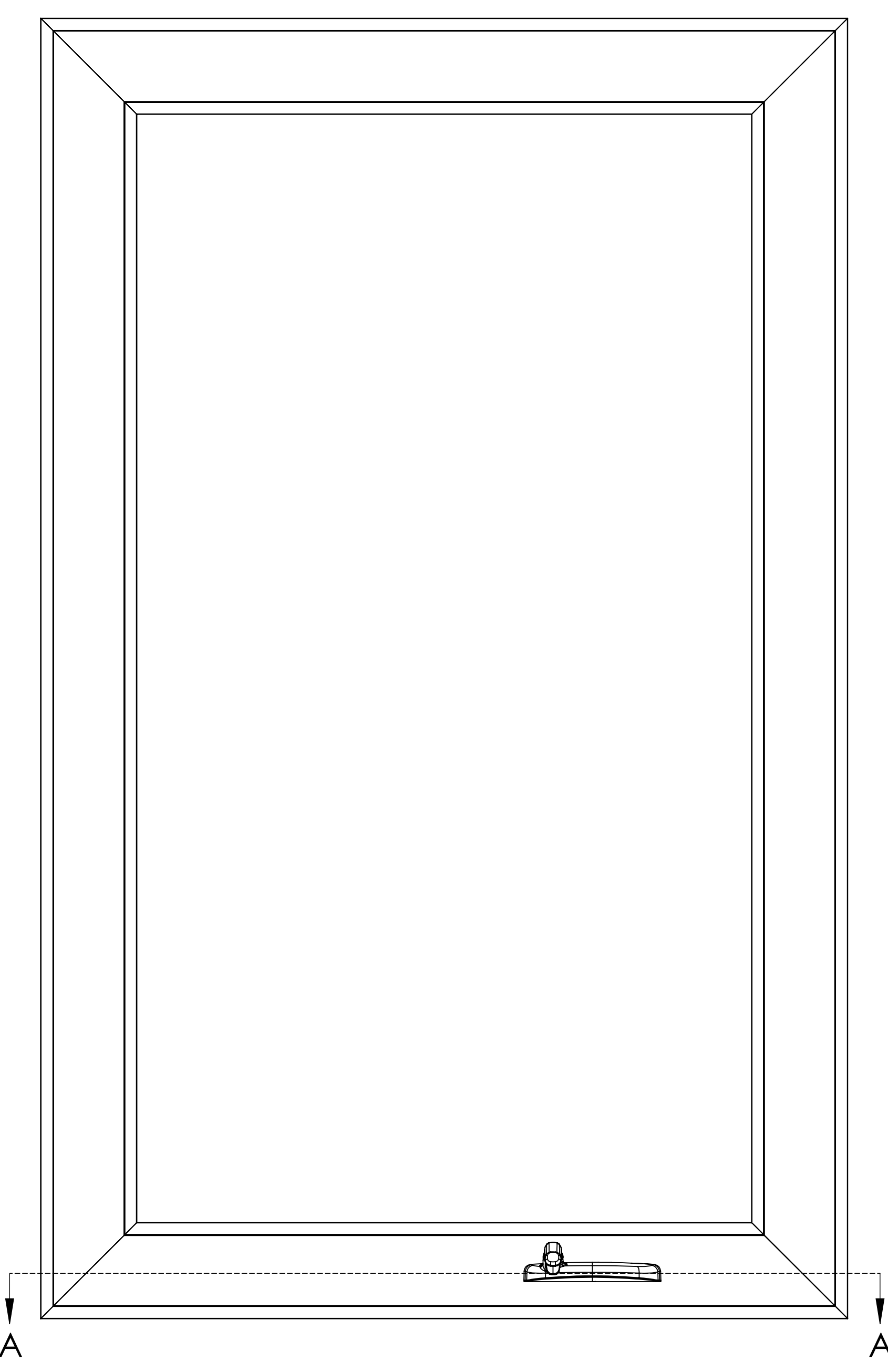
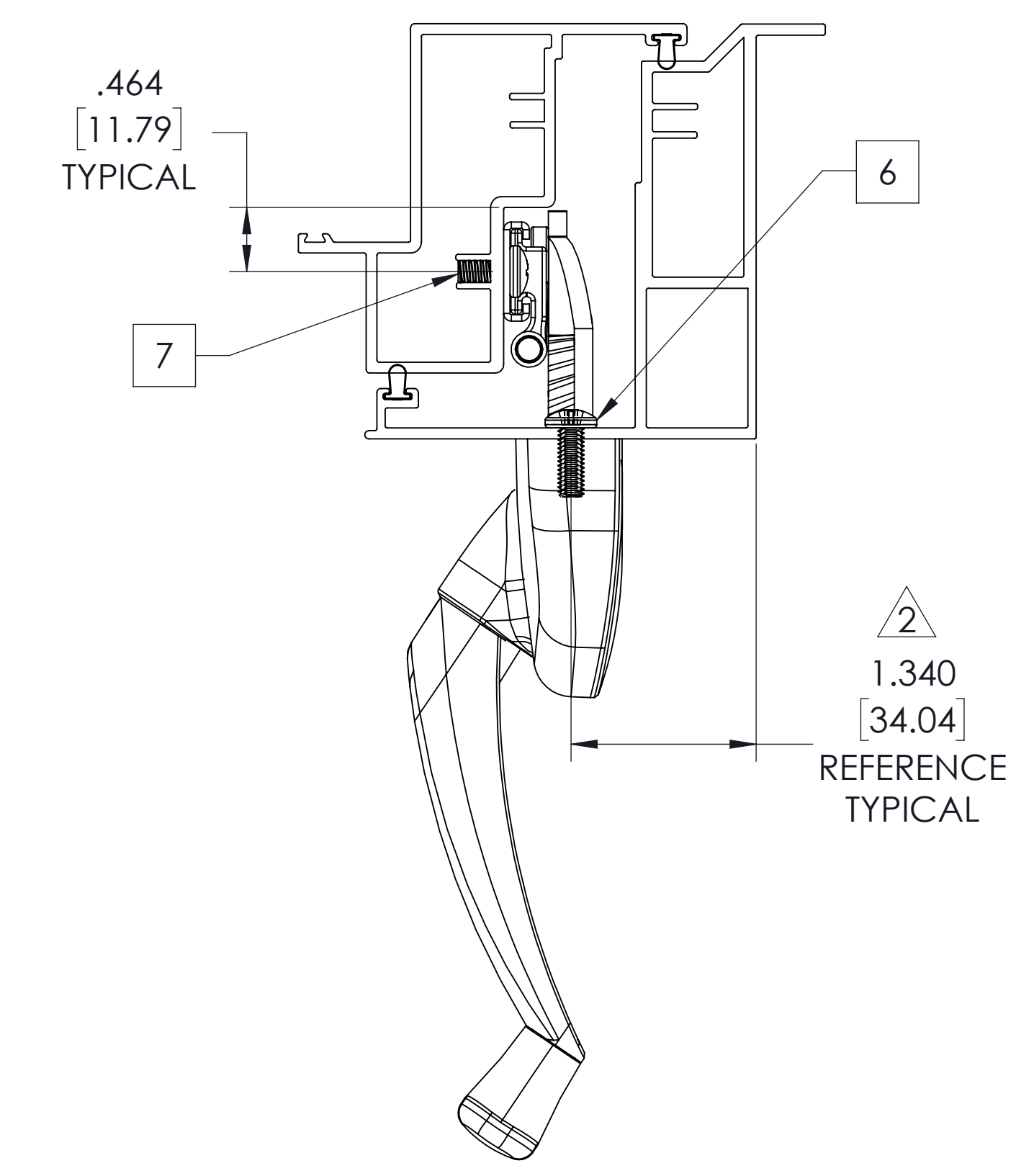
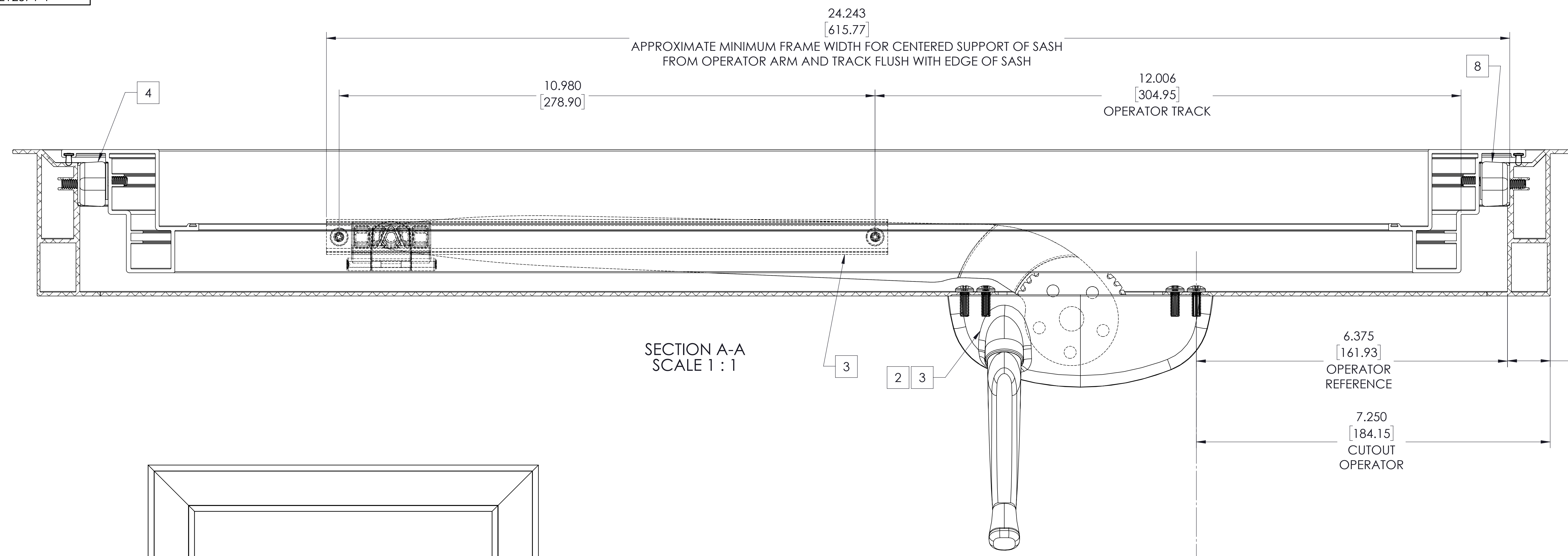


NO.	REV.	DATE	BY



4-BAR HINGE APPLICATION TABLE FOR AWNINGS						
HINGE CALL OUT AND ACTUAL LENGTH	AAMA CYCLE TESTED COUNTER BALANCED		ULTIMATE UNBALANCED CAPACITY		DEGREES OF OPENING STD. STOP	
	VENT HEIGHT RANGE	MAX SASH VENT	VENT HEIGHT RANGE	MAX SASH VENT		
34.24.00.208.1	10.50"	12"-20"	58 LBS	12"-20"	59'	
34.25.00.208.1	12.50"	20"-25"	73 LBS	20"-25"	53'	
34.26.00.208.1	14.50"	23"-29"	85 LBS	23"-29"	50'	
34.27.00.208.1	16.50"	25"-34"	99 LBS	25"-34"	50'	
34.28.00.208.1	18.50"	32"-37"	108 LBS	32"-37"	50'	
34.29.00.208.1	20.50"	34"-40"	117 LBS	34"-40"	49'	
34.31.00.208.1	24.50"	40"-44"	129 LBS	40"-44"	44'	
34.86.00.208.1	28.50"	50"-64"	175 LBS	50"-64"	42'	

ITEM NO.	PART NUMBER	DESCRIPTION	QTY.
1	55.04.XX.202	SINGLE ARM OPERATOR 14 RH, CONTOUR	1
2	11454	HANDLE	1
3	24035.1	Track	1
4	34.25.00.208 (SHOWN)	hinge 12 INCH WITH STOP	2
5	N-A	SCREW, 10-24 X 1/2 F PH PH MS S318-B	AR
6	N-A	SCREW, 10-32 X 1/2 T23 PH PH MS YZP	4

NOTE:

- IT IS IMPORTANT THAT THE HINGE AND SASH HEIGHT BE PROPERLY MATCHED TO ENSURE MAXIMUM OPERATOR EFFICIENCY AND AVOID SASH CHATTER. FOR MORE COMPLETE INFORMATION ON PROPER HINGE SIZING AND HOW TO OVERCOME CORNER PULL-IN PROBLEMS, SEE TRUTH TECH NOTE #2.
- HOLD THESE DIMENSIONS AS CLOSE TO THEIR MINIMUM AS MANUFACTURING TOLERANCES ALLOW.
- IF PVC MOUNTING SCREWS FOR ALL OPERATOR HARDWARE SHOULD PASS THRU TWO WALLS OR A SINGLE WALL WITH AN INTERIOR METAL INSERT.
- SEE TRUTH HARDWARE CATALOG FOR FURTHER INFORMATION ON APPLICATIONS OF OPERATOR COMPONENTS.
- ALL DIMENSIONS ARE AFTER WELD.

TRUTH HARDWARE MAKES NO WARRANTY OR REPRESENTATION OF ANY KIND, EXPRESS OR IMPLIED, WITH RESPECT TO QUALITY, CONTENT, FORM, PERFORMANCE, FITNESS FOR PURPOSE, MERCHANTABILITY OR OTHERWISE OF THE APPLICATION DRAWINGS PROVIDED. THESE DRAWINGS ARE USED AT THE RECIPIENT'S OWN RISK AND TRUTH HARDWARE HAS AND SHALL HAVE NO RESPONSIBILITY FOR RECIPIENTS OR ANY THIRD PARTIES. USE OF THESE DRAWINGS OR ANY OF THE INFORMATION CONTAINED THEREIN, THE RECIPIENT AGREES TO INDEMNIFY, DEFEND, AND HOLD HARMLESS TRUTH HARDWARE AND ITS EMPLOYEES AND THEIR SUCCESSORS AND ASSIGNS FROM AND AGAINST ANY AND ALL CLAIMS, SUITS, LOSSES, DAMAGES OR COSTS INCURRED FROM USING THESE DRAWINGS OR ANY CONTENT THEREOF.

Amesbury Truth
700 West Bridge Street
Owatonna, MN 55060
Telephone 507-451-5620

THIS DRAWING IS THE PROPERTY OF TRUTH HARDWARE. THE INFORMATION THEREON IS TO BE TREATED AS CONFIDENTIAL. IF IT IS NOT TO BE USED, COPIED OR DISCLOSED TO OTHER PARTIES, REMOVE OUR WATERMARK.	DATE: 10/26/2021
DRAWN BY: M. NEFF	SCALE: 1:4
CHECKED BY: MDN	STANDARD
PARTNAME: GENERIC ALUMINUM CONTOUR 55.04 SA AWW	REVISION: A
PROFILE: GENERIC ALUMINUM	DATE: 10/26/2021
PROJECT: 21257Y-1	SCALE: A